

1485 Chartwell Drive Offered at \$5,980,000



Perched at the top of prestigious Chartwell on an incredible 18,131 sq. ft. property is this architecturally significant home designed by E.G. Poskitt & Associates. You will be blown away by the spectacular 200+ degree views from all principal rooms. From the moment you enter the double gated driveway you will appreciate the design of this custom built 2 level, 5,726 sq. ft. home with 4 bedrooms and 5 bathrooms. Other features include high ceilings, outdoor pool, sauna, party room and too much more to list. The primary suite is stunning, also with panoramic views. An iconic home on a meticulously landscaped property.

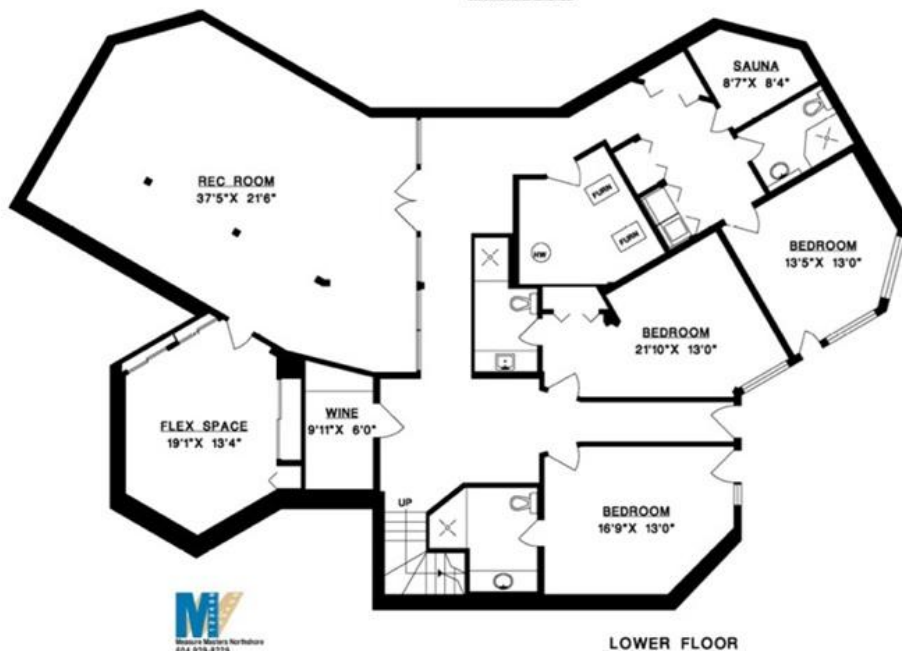
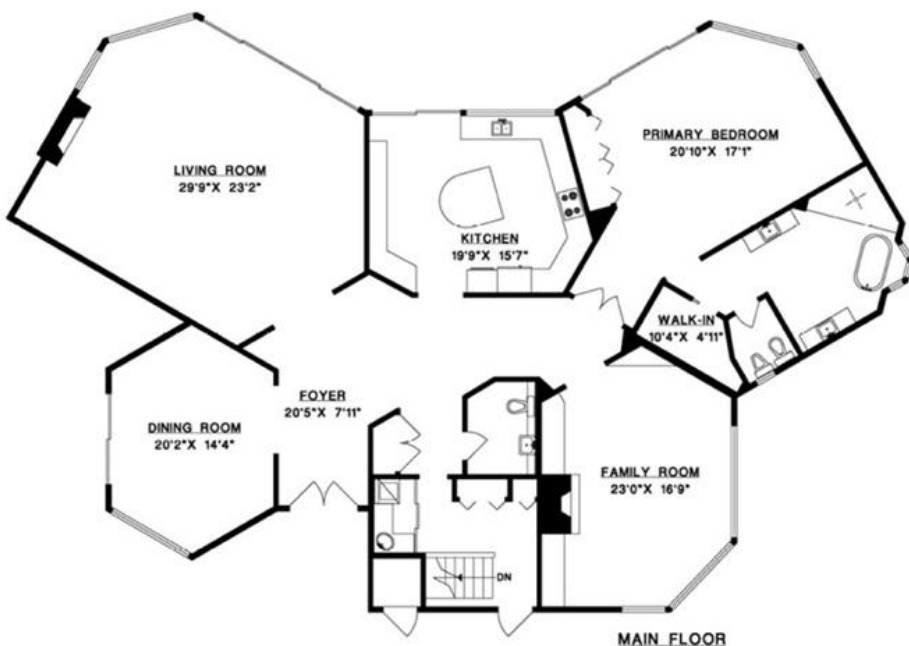


ERIC CHRISTIANSEN
eric@ericchristiansen.com

604-312-9999
2479 BELLEVUE AVE, WEST VANCOUVER, BC V7V 1E1

1485 CHARTWELL DRIVE, WEST VANCOUVER

MAIN FLOOR	2,870 SQ.FT.
LOWER FLOOR	2,856 SQ.FT.
TOTAL	5,726 SQ.FT.



ERIC CHRISTIANSEN
eric@ericchristiansen.com

604-312-9999
2479 BELLEVUE AVE, WEST VANCOUVER, BC V7V 1E1



ERIC CHRISTIANSEN
eric@ericchristiansen.com

604-312-9999
2479 BELLEVUE AVE, WEST VANCOUVER, BC V7V 1E1