



170 Carisbrooke Crescent Offered at \$2,598,000

Rarely available on this coveted Upper Lonsdale street, this exceptional property offers sweeping city and ocean views with stunning west-facing sunsets. Set on a 8,052 sq. ft. lot, the home features 2,312 sq. ft. of bright, functional living space with 5 bedrooms, including a beautifully renovated 2-bedroom suite ideal for extended family or a mortgage helper. Move-in ready for families, the property also presents outstanding future potential as a premium building lot in one of North Vancouver's most desirable neighbourhoods. A rare opportunity to enjoy incredible views, everyday livability, and long-term upside all in one property.



ERIC CHRISTIANSEN
eric@ericchristiansen.com

604-312-9999
2479 BELLEVUE AVE, WEST VANCOUVER, BC V7V 1E1

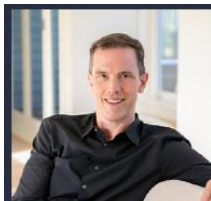
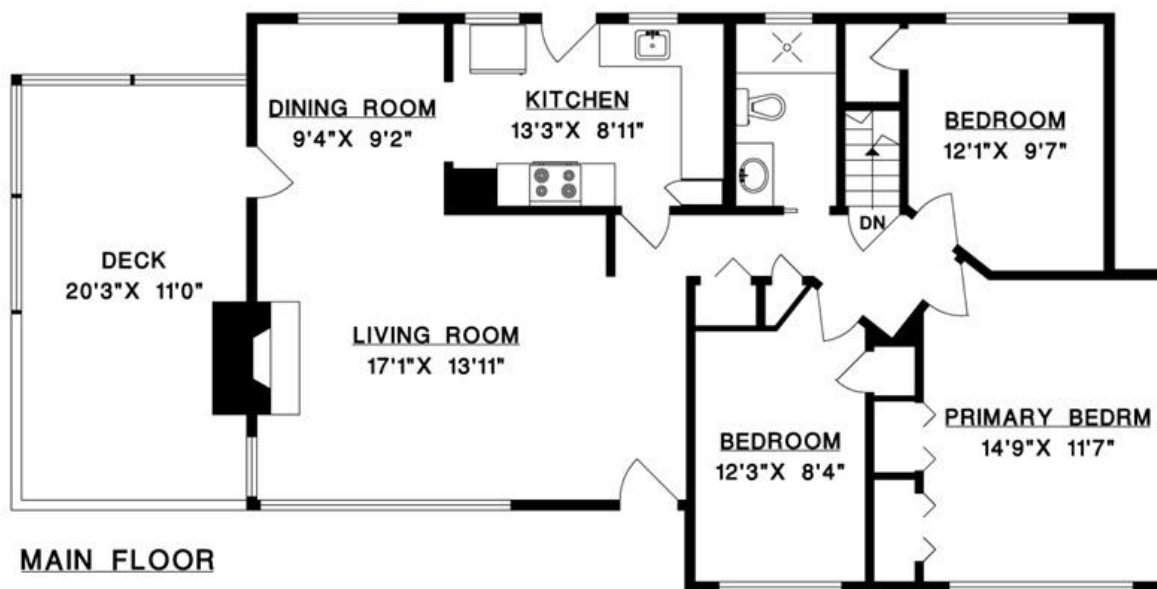
170 CARISBROOKE CRESCENT
NORTH VANCOUVER

MAIN FLOOR 1,156 SQ.FT.

LOWER FLOOR 1,156 SQ.FT.

TOTAL 2,312 SQ.FT.

DECK 245 SQ.FT.



ERIC CHRISTIANSEN
eric@ericchristiansen.com

604-312-9999

2479 BELLEVUE AVE, WEST VANCOUVER, BC V7V 1E1



ERIC CHRISTIANSEN
eric@ericchristiansen.com

604-312-9999
2479 BELLEVUE AVE, WEST VANCOUVER, BC V7V 1E1