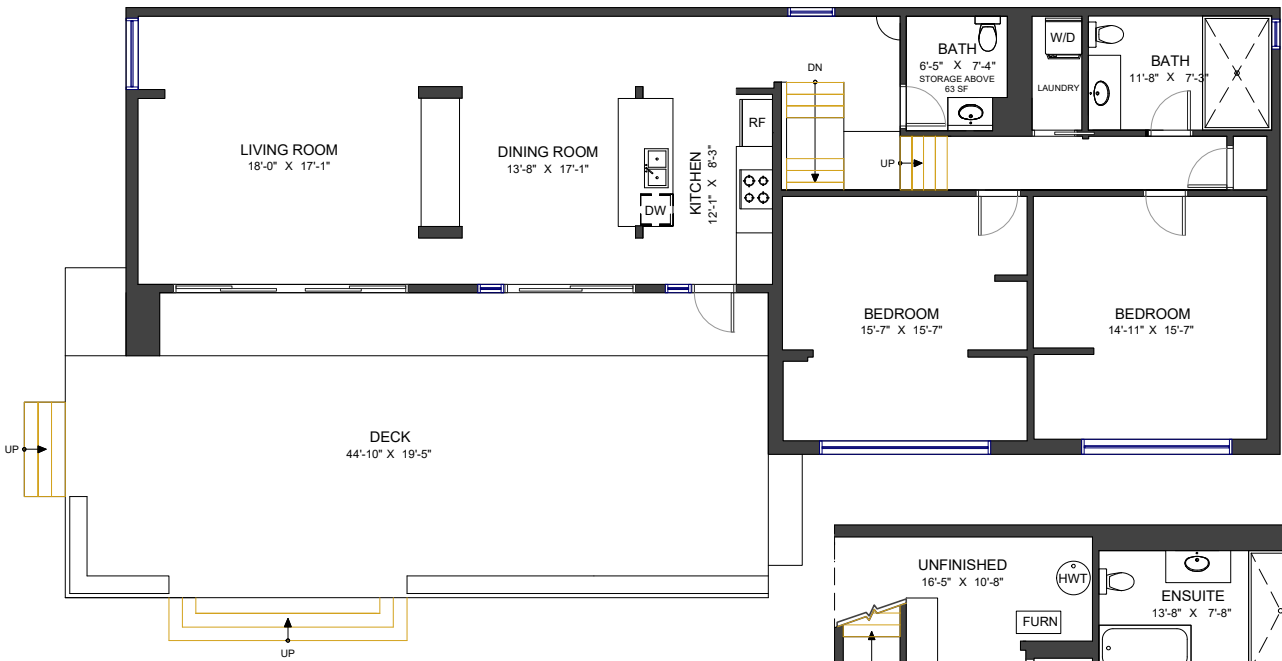


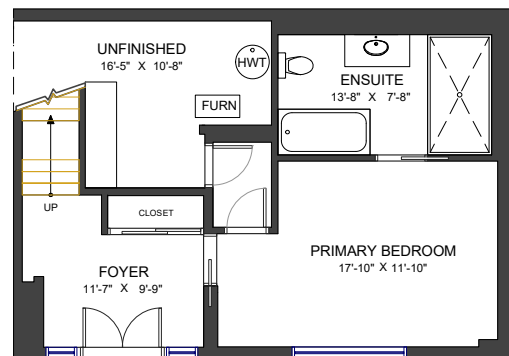
4697 Woodview Place
West Vancouver, BC



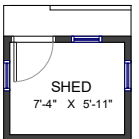
MAIN FLOOR	1,674 SF
LOWER FLOOR	564 SF
LIVING AREA	2,238 SF
UNFINISHED AREA	164 SF
TOTAL AREA	2,402 SF

AUXILIARY AREA	995 SF
DECK	878 SF
SHED	54 SF
STORAGE	63 SF

Main Floor
Ceiling Height: 8'



Lower Floor
Ceiling Height: 7'-10"



Valid Until: April 26, 2027



All dimensions are approximate and not suitable for architectural/construction use.
This is for marketing purposes only. The measurements are approximate within +/- 2%, E&O Insured.
Total square footage might be kept consistent with strata plan. It might include unfinished area.
We have no guarantee or warranty of the degree of room titles. Area is calculated per ANSI Z765-2003 method.

