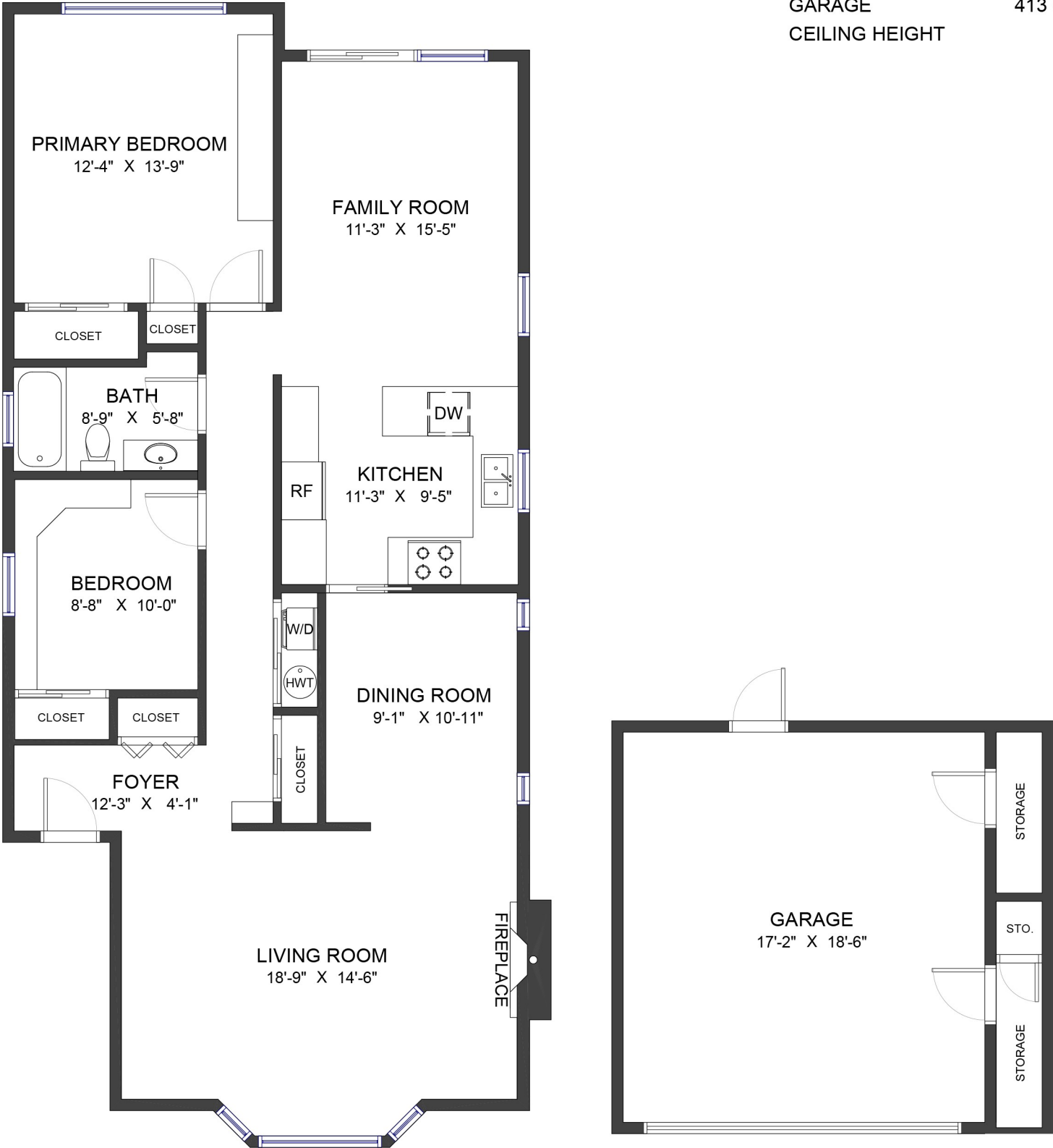


3782 Mt Seymour Parkway
North Vancouver, BC

LIVING AREA	1,238 SF
GARAGE	413 SF
CEILING HEIGHT	8'



Valid Until: May 21, 2026

All dimensions are approximate and not suitable for architectural/construction use.
This is for marketing purposes only. The measurements are approximate within +/- 2%, E&O insured.
Total square footage might be kept consistent with strata plan. It might include unfinished area.