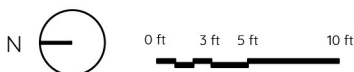
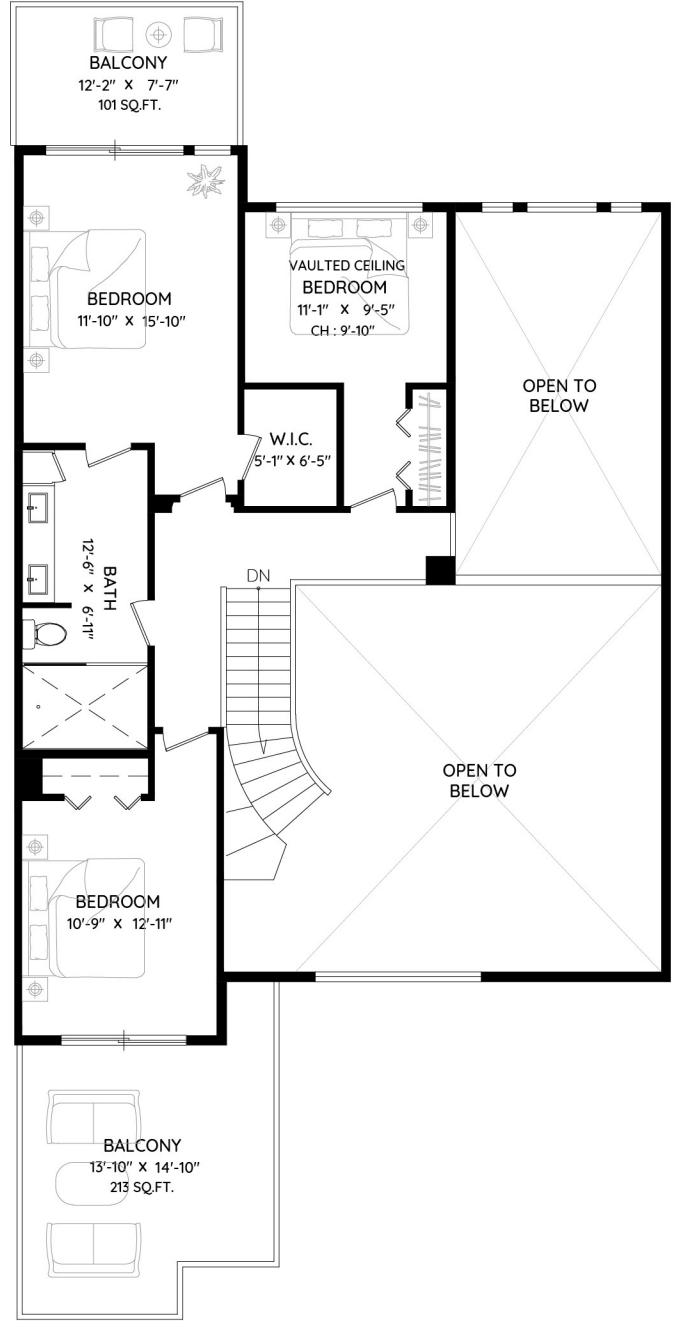
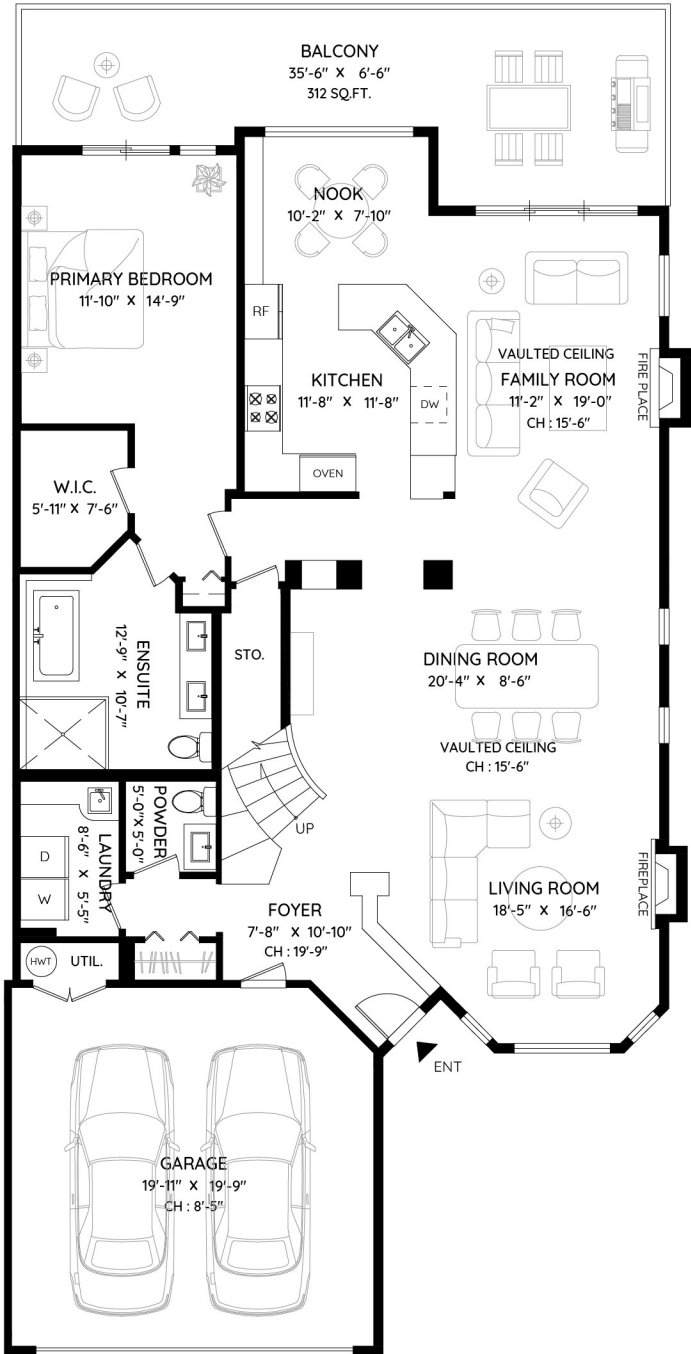


10 - 5130 ASHFEILD ROAD

WEST VANCOUVER, BC

MAIN	1,687 SQ.FT.	GARAGE	429 SQ.FT.
UPPER	910 SQ.FT.	BALCONY	626 SQ.FT.
TOTAL	2,597 SQ.FT.	TOTAL	1,055 SQ.FT.



The floor plan and measurements are approximate, typically within +/- 2%. These are intended strictly for advertising purposes. They may encompass unfinished areas and are not intended for architectural or construction applications. There may be variances in the numbers if there were restrictions on property access or if taking precise measurements at the time of measuring isn't feasible. E&O insured.