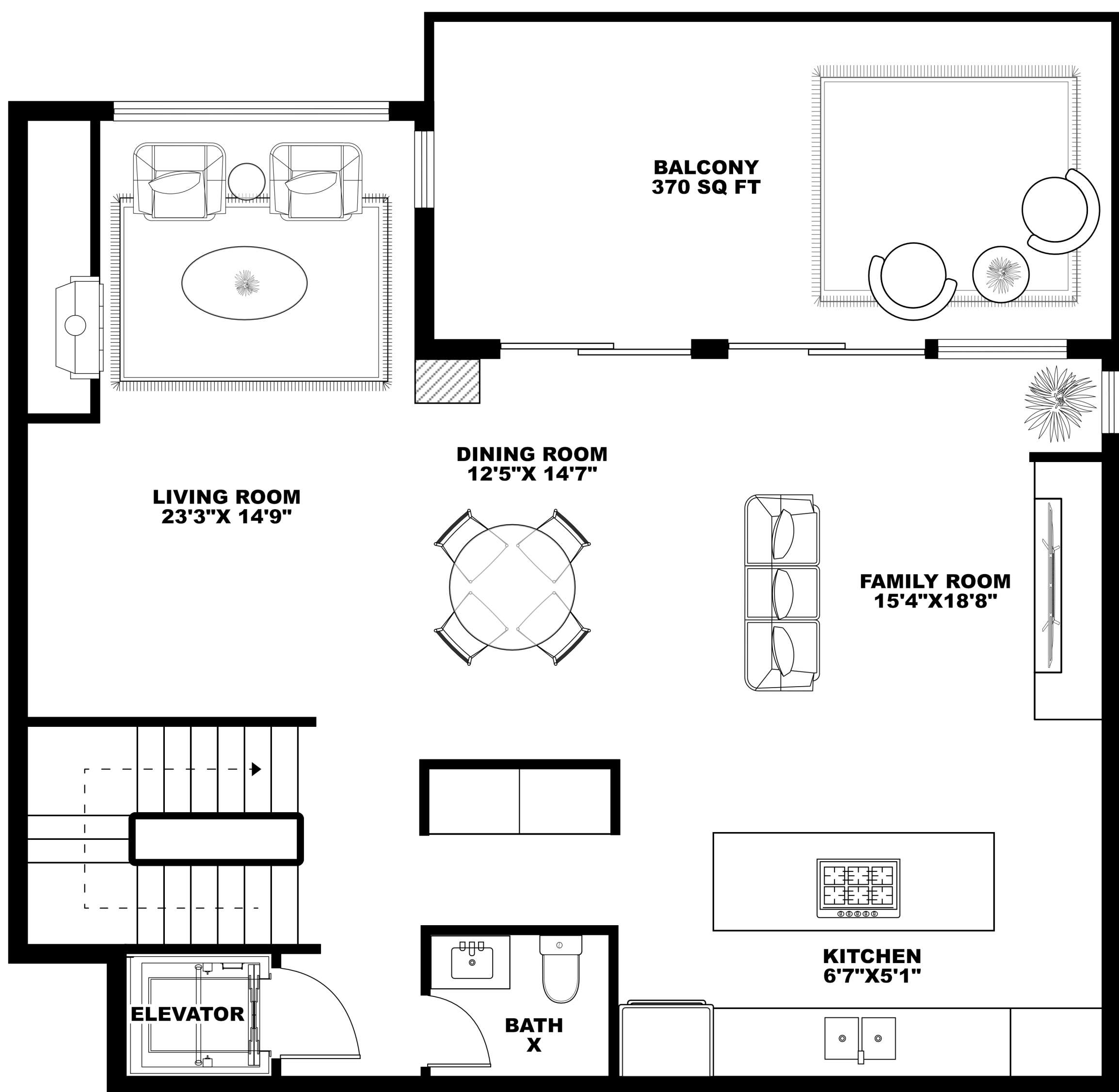
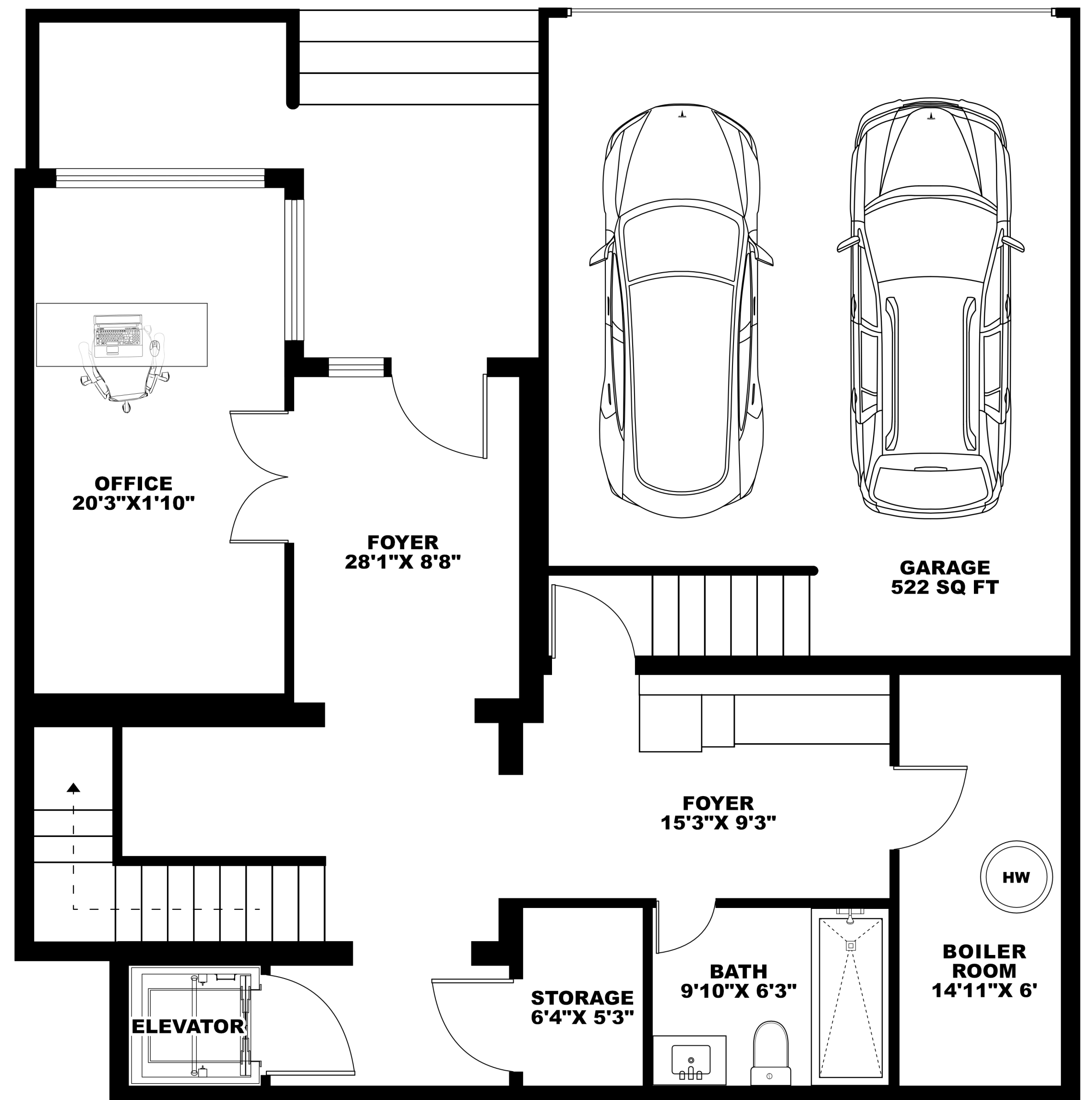




UPPER FLOOR



MAIN FLOOR



LOWER FLOOR



PATIO: 370 SQ FT LOWER FLOOR : 1,035 SQ FT
 GARAGE: 522 SQ FT UPPER FLOOR : 1,327 SQ FT
 BALCONY: 193 SQ FT MAIN FLOOR : 1,409 SQ FT

AUXILIARY AREA

TOTAL: 3,771 SQ FT



2761 HIGHVIEW PL WEST VANCOUVER

SIZES AND DIMENSIONS ARE APPROXIMATE, ACTUAL MAY VARY.