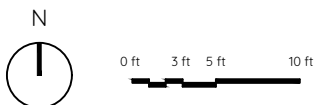
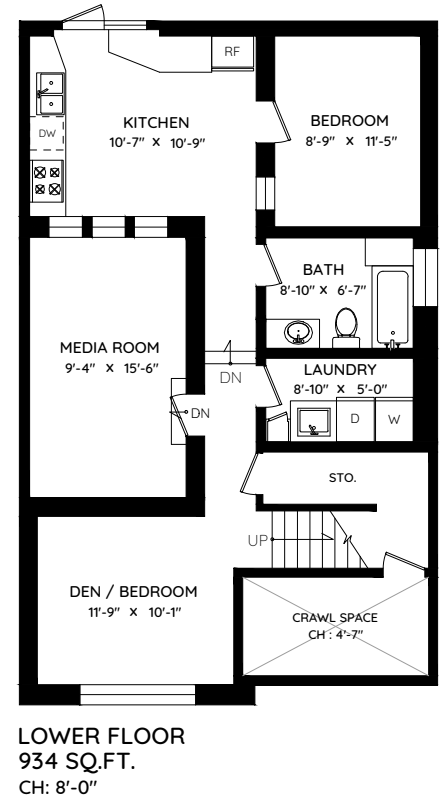
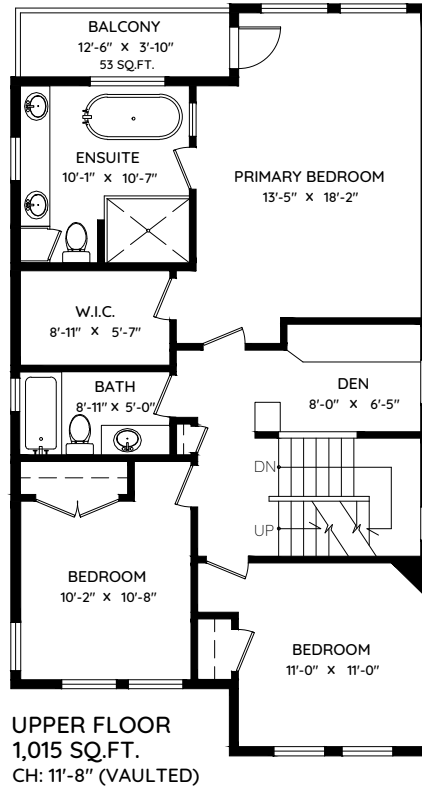
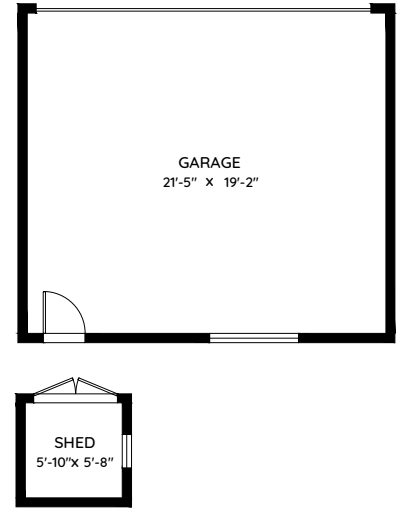
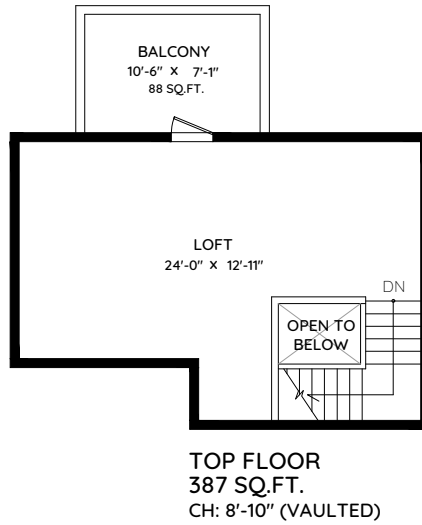
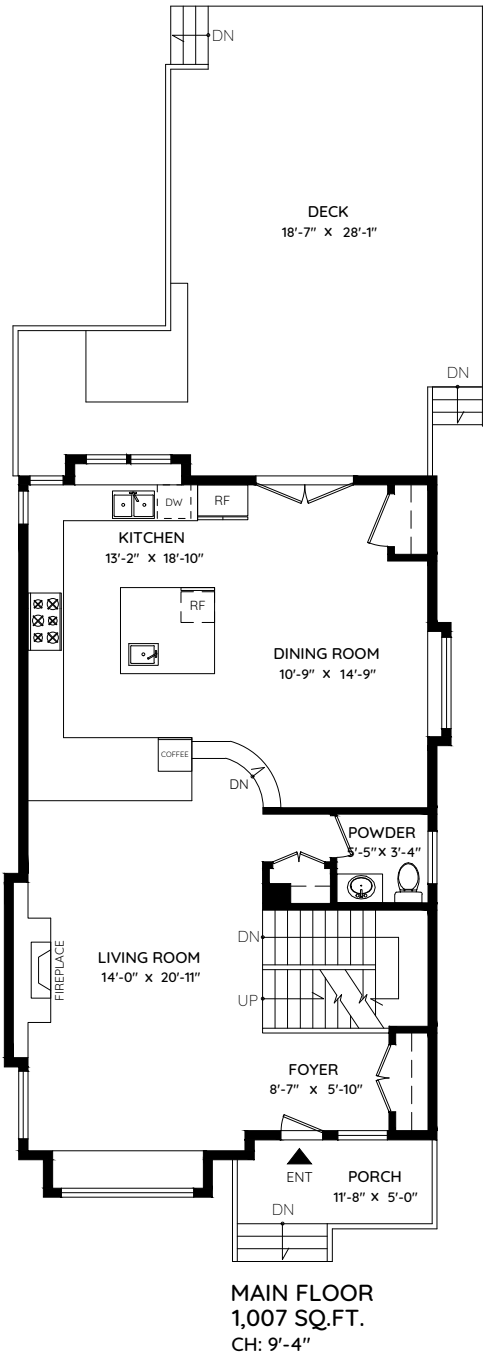


3257 WEST 11TH AVENUE

VANCOUVER, BC

MAIN	1007 SQ.FT.	GARAGE	455 SQ.FT.
UPPER	1015 SQ.FT.	BALCONY	141 SQ.FT.
TOP	387 SQ.FT.	DECK	598 SQ.FT.
LOWER	934 SQ.FT.	PORCH	75 SQ.FT.
TOTAL	3,343 SQ.FT.	SHED	47 SQ.FT.
		TOTAL	1,316 SQ.FT.



The floor plan and measurements are approximate, typically within +/- 2%. These are intended strictly for advertising purposes. They may encompass unfinished areas and are not intended for architectural or construction applications. There may be variances in the numbers if there were restrictions on property access or if taking precise measurements at the time of measuring isn't feasible. E&O insured.